

Innovation

Safety

Quality

Performance

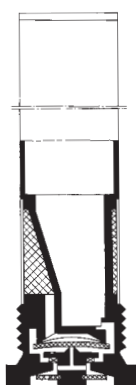


INSTALLATION INSTRUCTIONS

Drain - Valve

315 0.. ...



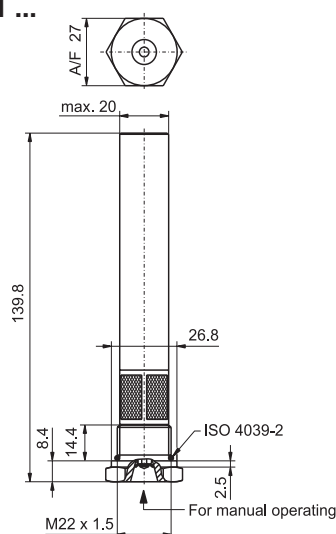
315 016 ...

1
Use 315 016 ... / 315 031 ...

The automatic drain valve automatically drains the condensate collected in the air reservoir.

Function 1

The diaphragm locks the outlet bore. Compressed air and condensate arrive through the filter and in the circular sealing area released by the diaphragm in the pressure room underneath the diaphragm. If the operating pressure falls in the air reservoir, then the diaphragm is pressed on the circular sealing area and removed from the outlet bore. The condensate is expelled through the outlet bore.

The outlet bore is closed, as soon as the pressure is equalized above and underneath the diaphragm.

315 031 ...

2

Assembly guidelines 2, 3, 6

The drain valve is screwed into the lowermost connection socket of the air tank under application of a sealingring.

Maintenance

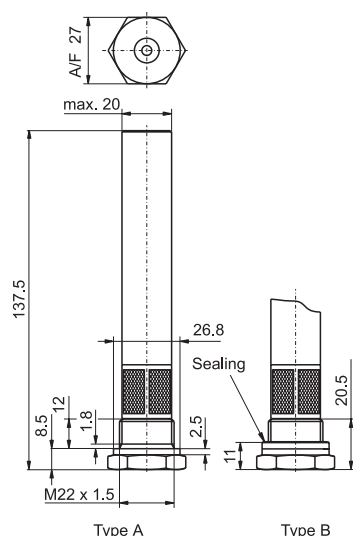
The drain valve must be maintained corresponding to legally stipulated requirements.

The integrated filter should periodically purified or at defect be exchanged.

Testing

Function and density of the Drain valve examine.

- Examine density, e.g. with a leak searcher-spray Order number 905 002 001.
- Function, drop pressure approx. about 0.2 to 0.8 bar in the air reservoir. Response pressure (drainage) see index types, must be matched at correct function.

315 016 ...

3

Technical Datas

Operating pressure:	p_e max. 20 bar
Operating temperature:	-40°C bis +80°C
Fixing torque:	40-50 Nm
Condensate output:	ca. 0.5 cm ³
Thread:	M 22 x 1.5

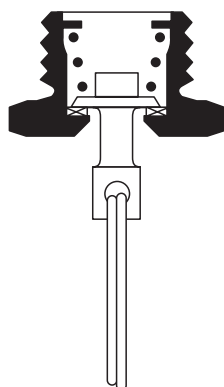
Types

Part. No.	Type	Operating pressure p_e in bar	response pressure Δp in bar
315 016 001	A	8.0 bar 15.0 bar	approx 0.2 bar approx 0.5 bar
315 016 011	A	8.0 bar	approx 0.8 bar
315 016 021	B	8.0 bar	approx 0.2 bar
315 031 021		8.0 bar 10.0 bar 12.0 bar	approx 0.2 bar approx 0.3 bar approx 0.4 bar

Attention - danger !


The removing of the component may only be done at pressure less tanks (tanks ventilated).

315 019 ...

4


Use 315 019 ...

The drain valve is used for venting and draining the air tank.

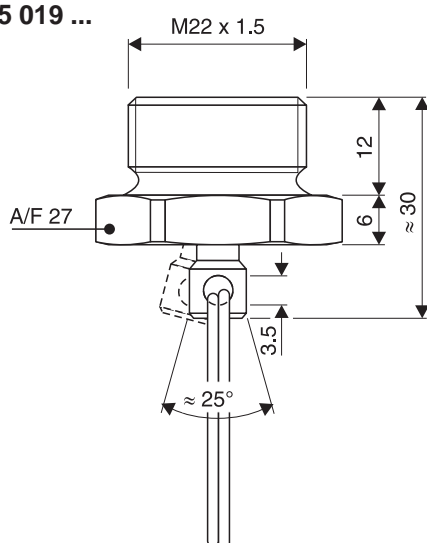
Function **4**

In the neutral position, the valve plunger together with the seal is pressed onto the housing seat by the compression spring. By laterally pulling or pushing the valve plunger, the seal is raised from the housing seat allowing the condensate to drain off.

Assembly guidelines **5, 6**

The drain valve is screwed into the lowermost connection socket of the air tank.

315 019 ...

5


Care must be taken if a linkage or cable is used for actuating the valve to ensure that, after actuation, the valve plunger once again returns into the neutral position.

Maintenance

The drain valve must be maintained corresponding to legally stipulated requirements.

During winter, the valve must be actuated daily, otherwise every 1000 km or after 20 hours of operation.

Testing

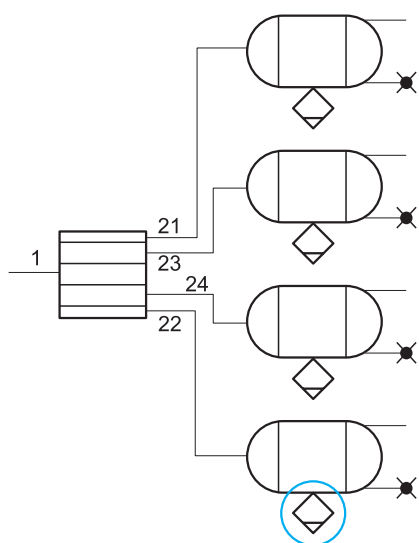
In addition to checking its function, the valve must also be checked for leaks.

Technical datas

Operating pressure:	p_e max. 20 bar
Operating temperature:	-46°C to +80°C
Fixing torque:	40 Nm
Thread:	M 22 x 1.5

Types

Part No.	Ring	Operating pressure p_e in bar	DIN-Type
315 019 001	without	20.0 bar	DIN 74292-B-20
315 019 011	with	20.0 bar	DIN 74292-C-20


6

Attention - danger !



The removing of the component may only be done at pressure less tanks (tanks ventilated).

Austria
Haldex Wien Ges.m.b.H
Vienna
Tel. +43-1 8 65 16 40
Fax +43-1 8 65 16 40 27
e-mail: office@baeder-haldex.at

Belgium
Haldex N.V./S.A.
Zaventem(Brussels)
Tel. +32-2 725 37 07
Fax +32-2 725 40 99
e-mail: info@hbe.haldex.com

Brazil
Haldex do Brasil
Sao Paulo
Tel. + 55-11 531 41 59
+55-11 531 49 99
Fax +55-11 531 95 15
e-mail: info@hbr.haldex.com

China
Haldex International Trading Co.Ltd.
Shanghai
Tel. +86-21 6289 44 69
Fax +86-21 6279 05 54
e-mail: haldex@public.sta.et.cn

France
Haldex Europe S.A.
Weyersheim (Strasbourg)
Tel. +33-3 88 68 22 00
Fax +33-3 88 68 22 09
e-mail: info@hfr.haldex.com

Germany
Haldex Brake Products GmbH
Denkendorf (Stuttgart)
Tel. +49-711 93 49 17-0
Fax +49-711 93 49 17-40
e-mail: info@hde.haldex.com

Haldex Brake Products GmbH
Heidelberg
Tel. +49-6221 70 30
Fax +49-6221 70 3400
e-mail: info@hbpde.haldex.com

Great Britain
Haldex Ltd.
Newton Aycliffe
Tel. +44-1325 310 110
Fax +44-1325 311 834
e-mail: info@huk.haldex.com

Haldex Brake Products Ltd.
Redditch
Tel. +44-1527 499 499
Fax +44-1527 499 500

Poland
Haldex Sp.z.O.o.
Wielun
Tel. +48-43 843 45 16
Fax +48-43 843 36 89
e-mail: info@haldex.net.pl

Spain
Haldex Espana S.A.
Parets del Valles (Barcelona)
Tel. +34-93 573 10 30
Fax +34-93 573 07 28
e-mail: haldexsa_esp@passwordsa.es

Sweden
Haldex Brake Products AB
Landskrona
Tel. +46-418 577 00
Fax +46-418 244 35
e-mail: info@hbpse.haldex.com

South Korea
Haldex Korea Ltd.
Seoul
Tel. +82-2 2636 7545
Fax +82-2 2636 7548
e-mail: haldexk@mail.hkr.haldex.com

USA
Haldex Brake Products Corp.
Kansas City
Tel. +1-816 891 2470
Fax +1-816 891 9447
e-mail: info@hbpus.haldex.com

These installation instructions correspond to knowledge and experience at the time of print and are subject to revision upon modification. Haldex does not accept any liability for applications exceeding the above-mentioned installation instructions. Special instructions are required in these cases.

We reserve the right make modifications in respect of technical progress. Copying in extract from this document is only permissible with Haldex approval.

**These installation instructions replaces the version 315 019 ...
issue September 1982**



The Haldex group is a global supplier of proprietary products for trucks, trailers cars and industrial vehicles, with special emphasis on performance and safety. Haldex is listed on the Stockholm Stock Exchange.

000 700 025 St.1/TS/05.00



Performance & Safety in Vehicles