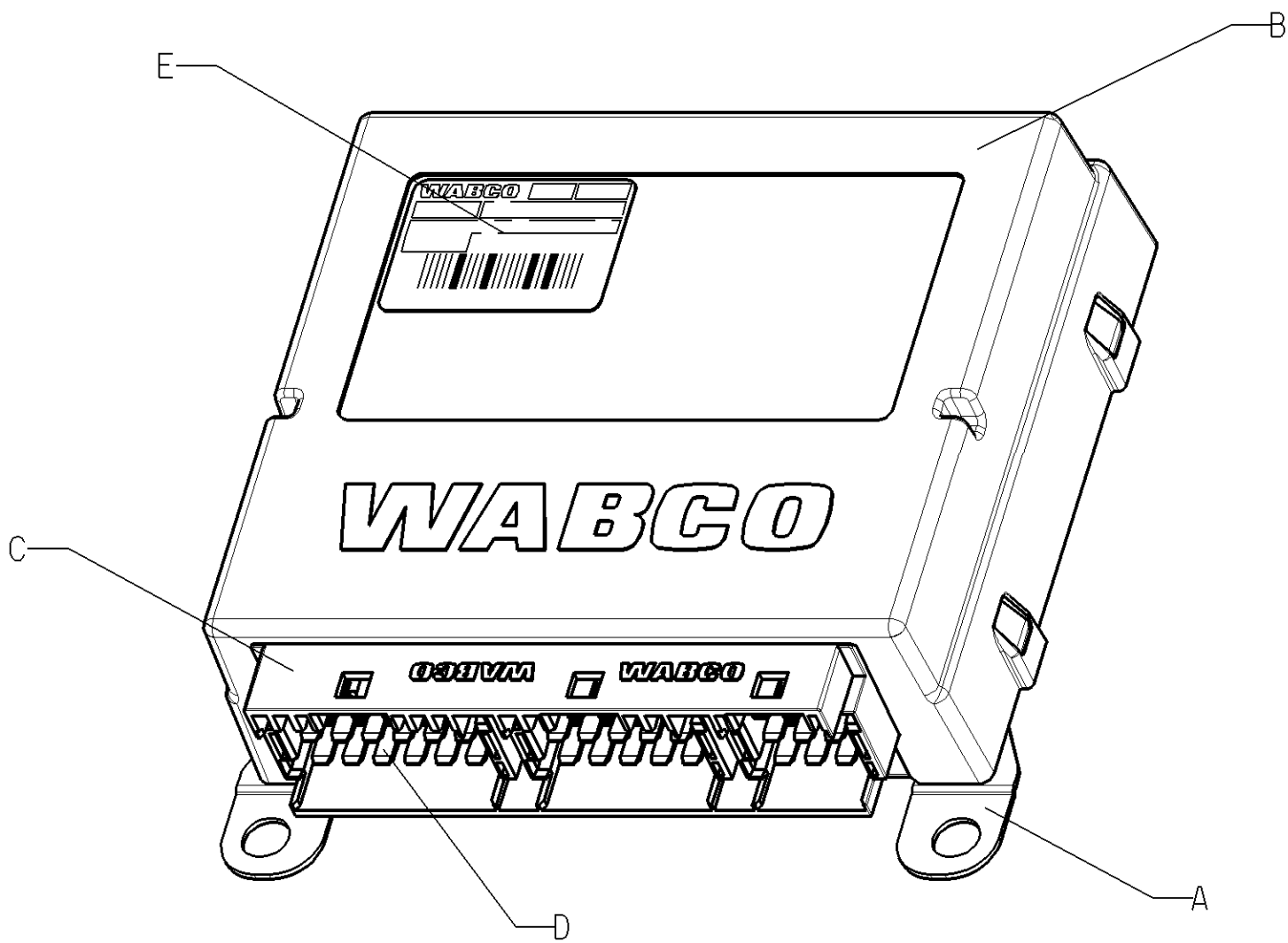
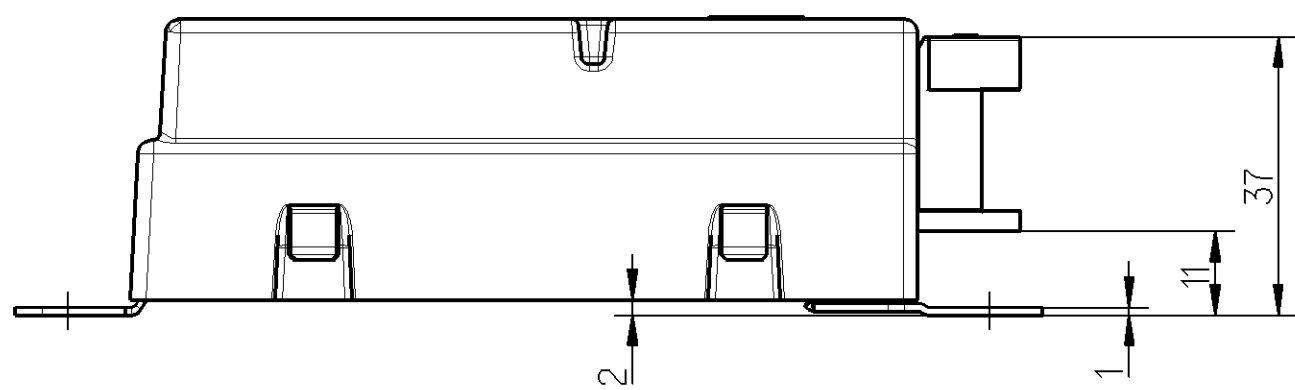
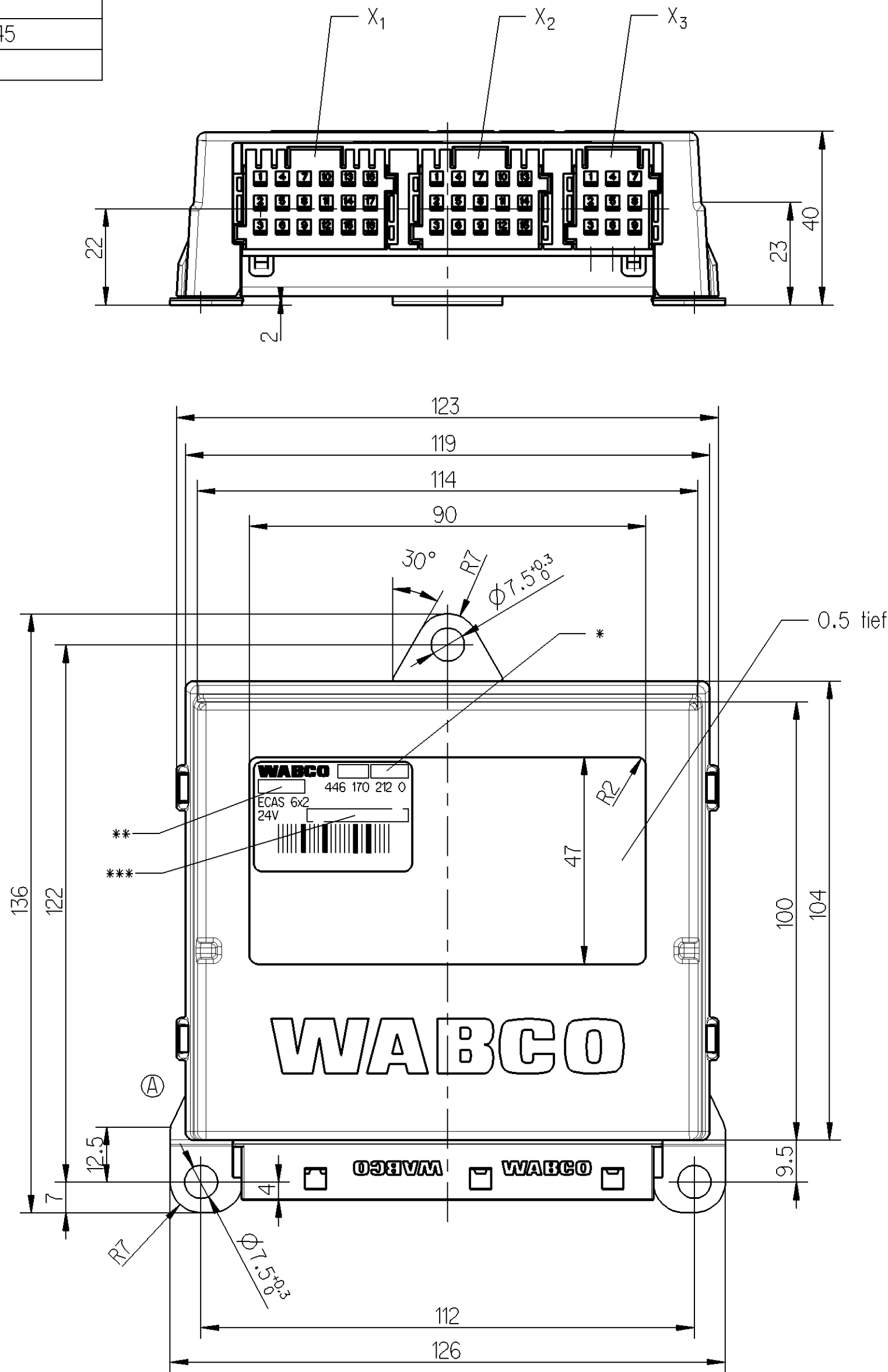


A	ZINC COATED STEEL	JED-585-2
B	ABS	JED-465-5
C	PBT GF20	JED-375-1
D	TIN-PLATED COPPER	JED-570-545
E	POLYESTER	



DATE OF MANUFACTURE:  
\* HERSTELLDATUM: JED-226  
DATE DE FABRICATION:  
DATA DI FABRCAZIONE:

SERIAL NUMBER GREATER THAN:  
\*\* FORTSCHRITZAHL. GROSSER ALS: 11000 (A)  
NUMERO DE SERIE PLUS GRAND QUE:  
NUMERO DI SERIE PIU GRANDE DI:

INSPECTION MARK:  
\*\*\* PRUEFZEICHEN: 022063  
MARQUE DE CONTROLE:  
STAMPA DI COLLAUDO:

VOLTAGE:  
SPANNUNG: 22 V ... 32 V DC  
TENSION:  
TENSIONE:

THERMAL RANGE OF APPLICATION:  
THERMISCHER ANWENDUNGSBEREICH: -40 °C ... +75 °C  
GAMME D'APPLICATION THERMIQUE:  
CAMPO TERMICO D'APPLICAZIONE:

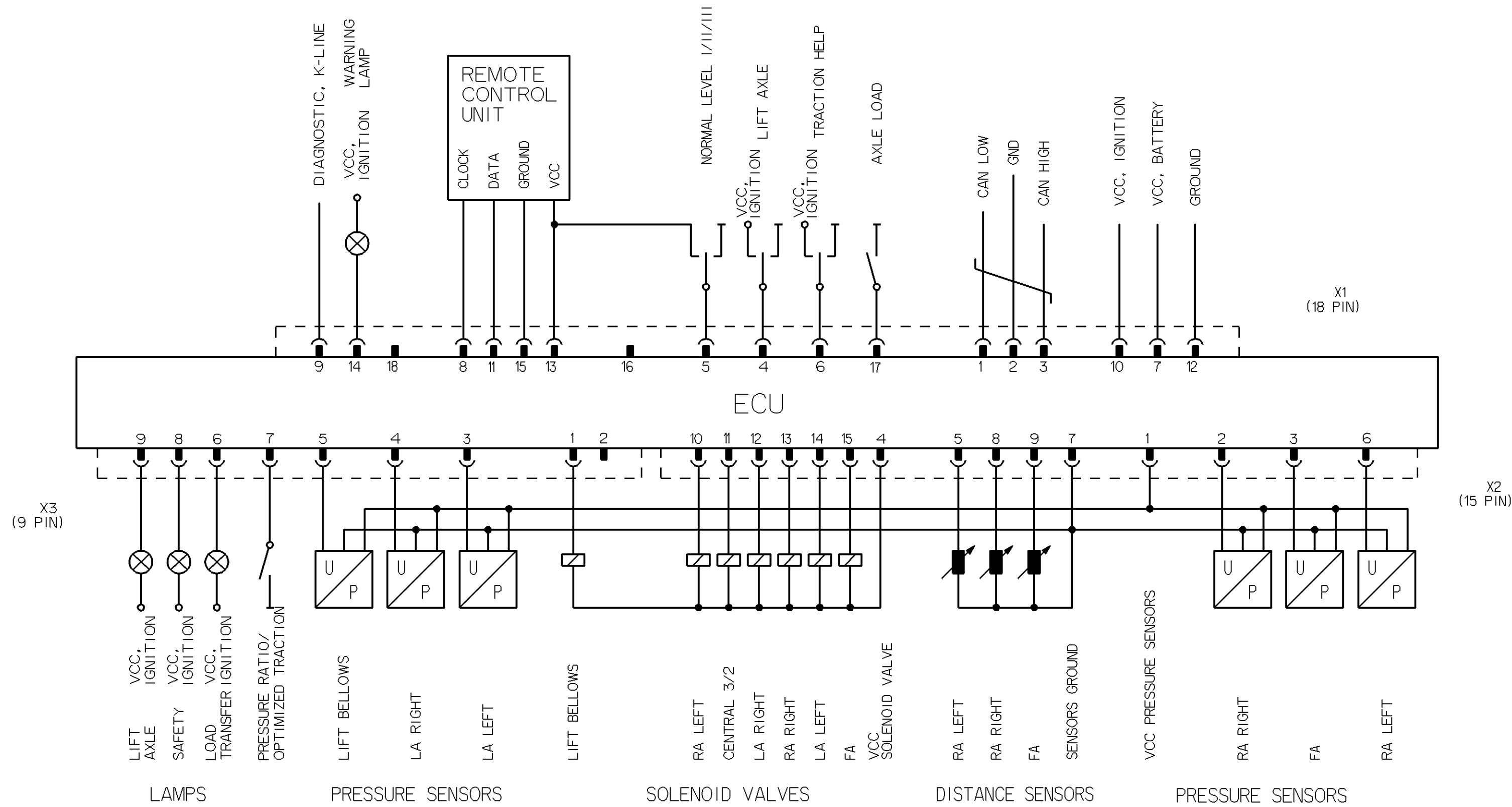
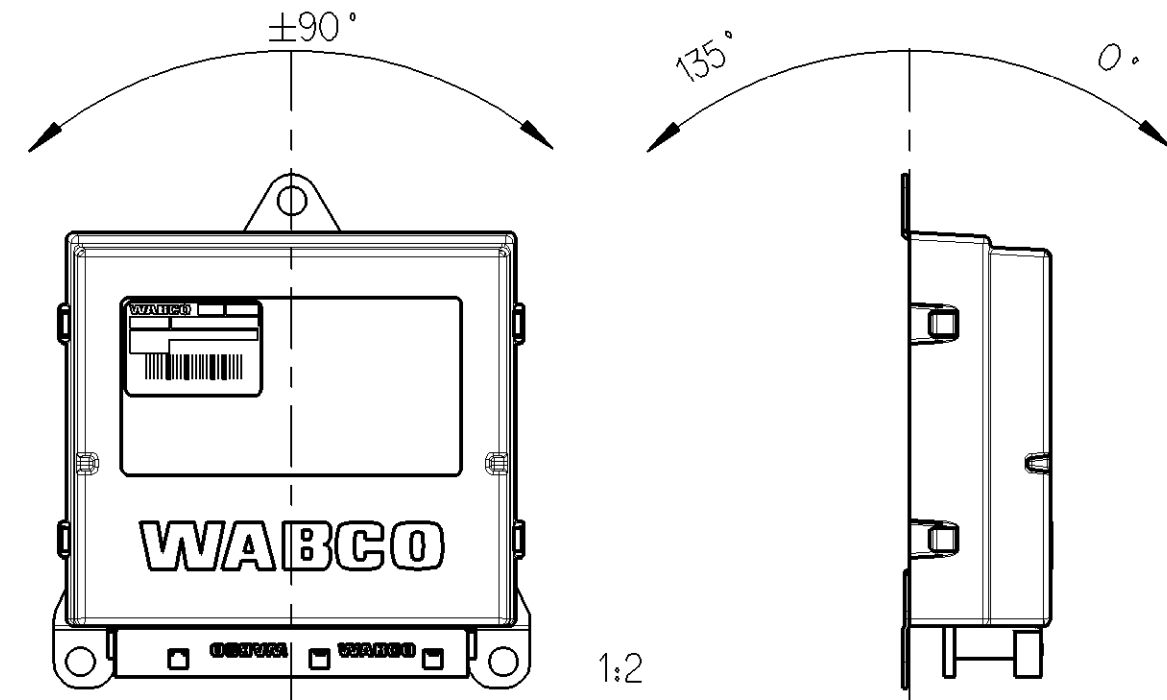
STORAGE TEMPERATURE:  
LAGERTEMPORATUR: -40 °C ... +90 °C  
TEMPERATURE DE STOCKAGE:  
TEMPERATURA DI IMMAGAZZINAMENTO:

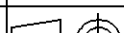
DEGREE OF PROTECTION:  
SCHUTZART: IP 30 (IEC 529)  
DEGRE DE PROTECTION:  
GRADO DI PROTEZIONE:

FURTHER TECHNICAL DATA SEE PRODUCT SPECIFICATION:  
WEITERE TECHNISCHE DATEN SIEHE PRODUKTSPEZIFIKATION 446 170 212 0 (DOC. CODE 435)  
(INDEX BEACHTEN):  
POUR AUTRES DONNEES TECHNIQUES VOIR SPECIFICATION DU PRODUIT:  
PER ULTERIORI DATI TECNICI VEDERE SPECIFICA DI PRODOTTO:

FINISHING VARNISH ON THE PRINTED BOARD:  
UEBERZUGSLACK AUF DER LEITERPLATTE: JED-543  
VERNIS ENDUIT SUR CARTE IMPRIMEE:  
VERNICE DI RIVESTIMENTO SULLA PIASTRA STAMPTA:

INSTALLATION POSITION:  
EINBAULAGE:  
POSITION D'INSTALLATION:  
POSIZIONE DI MONTAGGIO:



General Specification: JED-334-0					Copyright WABCO *		<b>WABCO</b>									
Further Technical Data:					Date: _____ Drawn: _____ Signature: _____											
Doc. Code:		Sheet: _____		To: _____		2004-01-07		HEYDA		ELECTRONIC ELEKTRONIK ECAS 6x2 CAN ELECTRONIQUE ELETRONICA						
General Tolerances: JED-261					Checked: _____		2004-01-07		SCHWARZER							
Range of Nominal Dimensions ( ± mm)					Expert: _____		SCHWARZER									
Class 1)					≤ 50		> 50		> 180			> 400		✕		
Fine		0.5		1.0		1.5		2.0		4.0		±3°		0		
Medium		X		1.0		2.0		3.0		4.0		±3°		0		
Coarse		2.0		3.5		5.0		6.5		0		±3°		0		
Tapped Holes acc.					Mass		Scale		Material No.		WABCO Id. No.: 446170220					
					0.280		R/G		1:1 (1:2)		446 170 212 0		Dec.Code		Language	
1) Tolerance Class Applied Crossmarked					Size		TRI		605		en/de		fr/it		1/1	
					A 1		620				Function Code		CAD System		Prod.Type	
									Pro/E		01 X		446 170 202 0			