

EUROPEAN



AMERICAN



ASIAN



TRUCK



TRAILER



BUS



LIGHT COMMERCIAL
VEHICLES

jaltest
soft

multibrand
diagnostics

www.grupojalair.com

cojali

www.jaltest.com

EUROPEAN



Disconnect

3.09.2.1.1

start

Jaltest Soft

EN

15:38



EUROPEAN >> TRUCK



Disconnect

3.09.2.1.1

start

Jaltest Soft

EN

15:39

 BEULAS	 BMC	 BOVA VDL	 CAETANO
 CAMO	 CASTROSUA	 CREDO	 FAREBUS
 HISPANO	 INDCAR	 INTEGRALIA	 IRISBUS
 IRIZAR	 ISUZU	 IVECO	 MAN
 MERCEDES	 NEOPLAN	 NOGE	 OTOKAR
 RENAULT	 SCANIA	 SETRA	 SITCAR
 SOLARIS	 SOR	 SUNSUNDEGUI	 VAN HOOB
 VOLVO	 GENERIC	 OBD	

EUROPEAN >> BUS



Disconnect

3.09.2.1.1

MODELS' RANGE

Sort by

ALL

MODEL

Trailer

TYPE OF SYSTEM

Sort by

ALL

SYSTEM

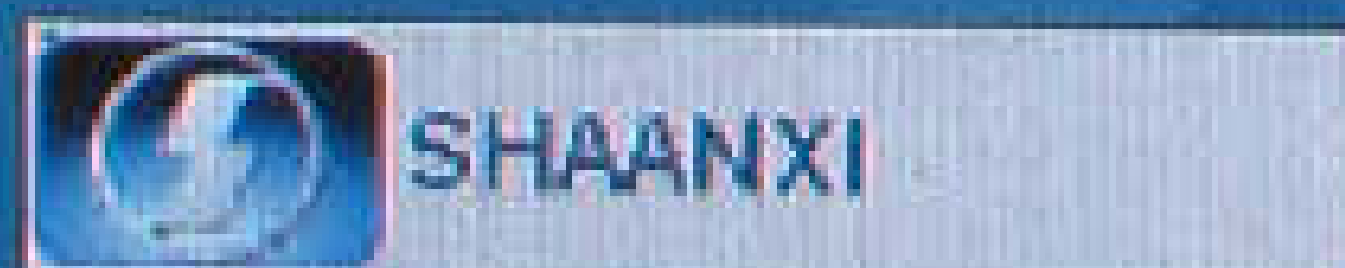
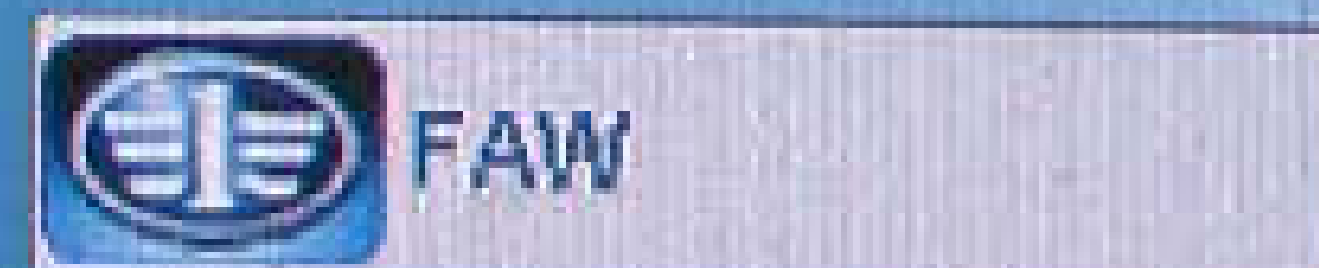
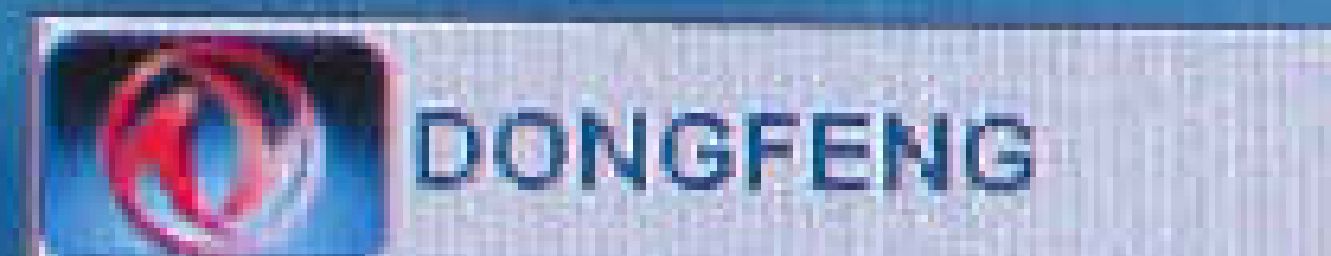
EPV, Electric Proportional Valve
 Haldex, EB+
 Haldex, EB+ 27 generation
 Haldex-Grau, ABS MODAL
 Haldex-Grau, Modular
 Knorr-Bremse, A18
 Knorr-Bremse, KB3-TA
 Knorr-Bremse, KB4-TA
 Knorr-Bremse, TEBS Gen2
 Knorr-Bremse, TEBS4 via K
 Knorr-Bremse, TEBS4 via CAN
 MGX
 Trailer ELM, Electronic suspension management
 Wabco, TCE, Trailer Central Electronics
 Wabco, Trailer EBS C
 Wabco, Trailer EBS D
 Wabco, Trailer EBS D via CAN
 Wabco, Trailer EBS E
 Wabco, Trailer ECAS
 Wabco, VCS
 Wabco, VCSII
 Wabco, Vario C

EUROPEAN >> TRAILER >> TRAILER >> Trailer



Disconnect

3.09.2.1.1

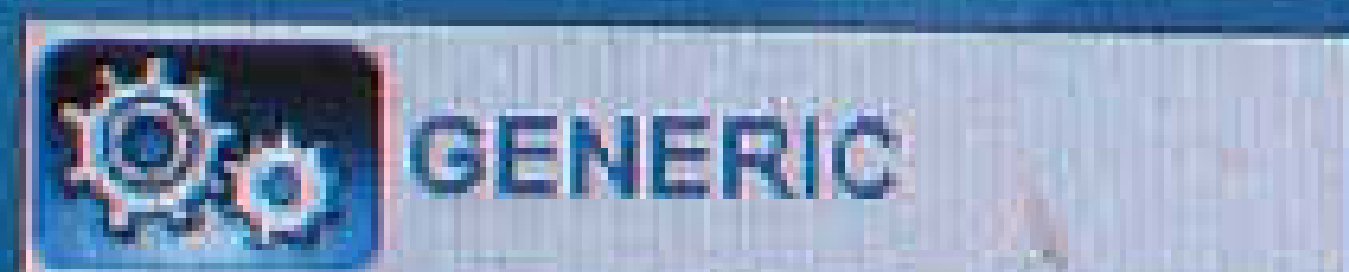
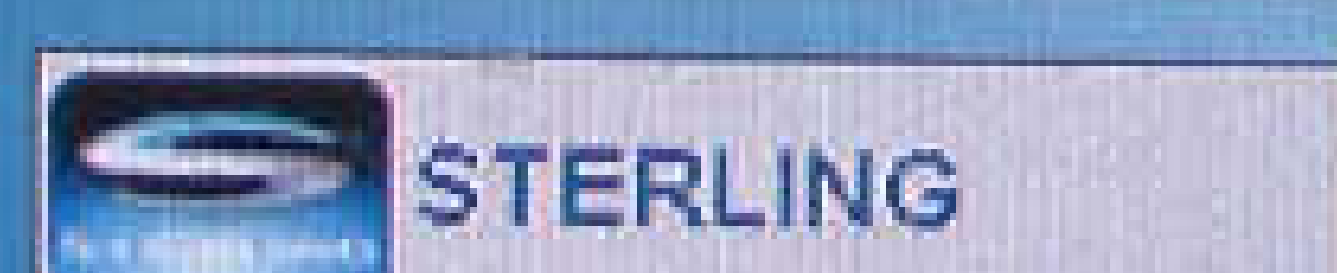
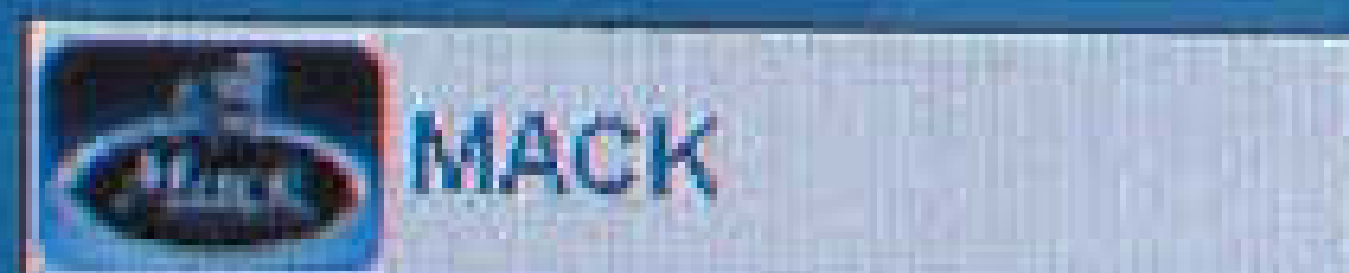


ASIAN >> TRUCK



Disconnect

3.09.2.1.1



AMERICAN >> TRUCK



Disconnect

3.09.2.1.1

start

Jaltest Soft

EN

15:40

MODELS' R

Upload parameters
Download parameters

Sort by ALL

MODEL

F 2000

F 90

G 90

L 2000

LE

M 2000

M 90

ME

TGA

TGL

TGM

TGS

TGX

TYPE OF SYSTEM

Sort by ALL

SYSTEM

ABS Ci12, Anti-lock Braking System

ABS KB3A, Anti-lock Braking System

ATC, Automatic Temperature Control

ECAS 4x2, Electronically Controlled Air Suspension

ECAS 6x2, Electronically Controlled Air Suspension

ECAS ESAC, Electronically Controlled Air Suspension

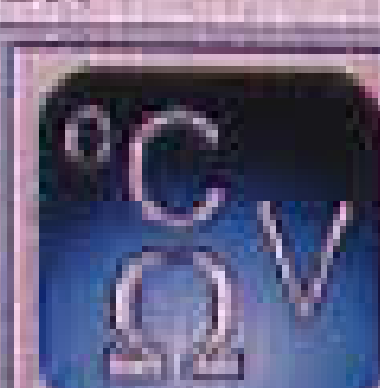
ECAS w/o sp, Electronically Controlled Air Suspension

EDC MS5, Electronic Diesel Control

EST 42, Retarder

GKR, Air conditioning

EUROPEAN >> TRUCK >> MAN >> F 2000 >> ECAS 6x2, Electronically Controlled Air Suspension



Disconnect

3.09.2.1.1

Sort by AL

F 2000

F 90

G 90

L 2000

LE

M 2000

M 90

ME

TGA

TGL

TGM

TGS

TGX

Open

Look in: Files Parameters



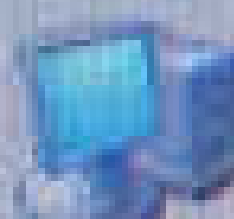
Recent



Desktop



My Documents



My Computer



My Network Places

File name:

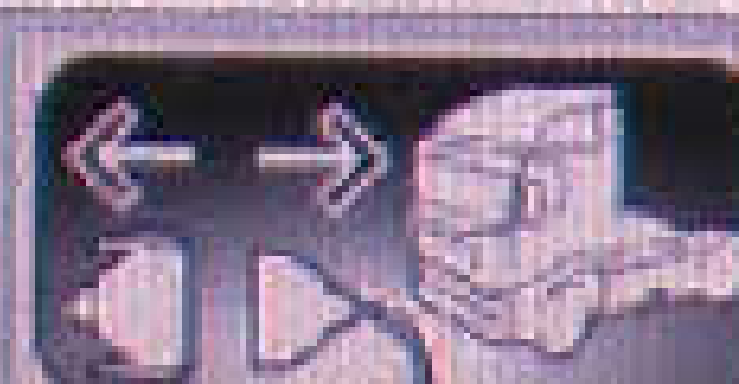
Files of type:

*.jcf

Open

Cancel

EUROPEAN >> TRUCK



Disconnect

3.09.2.1.1